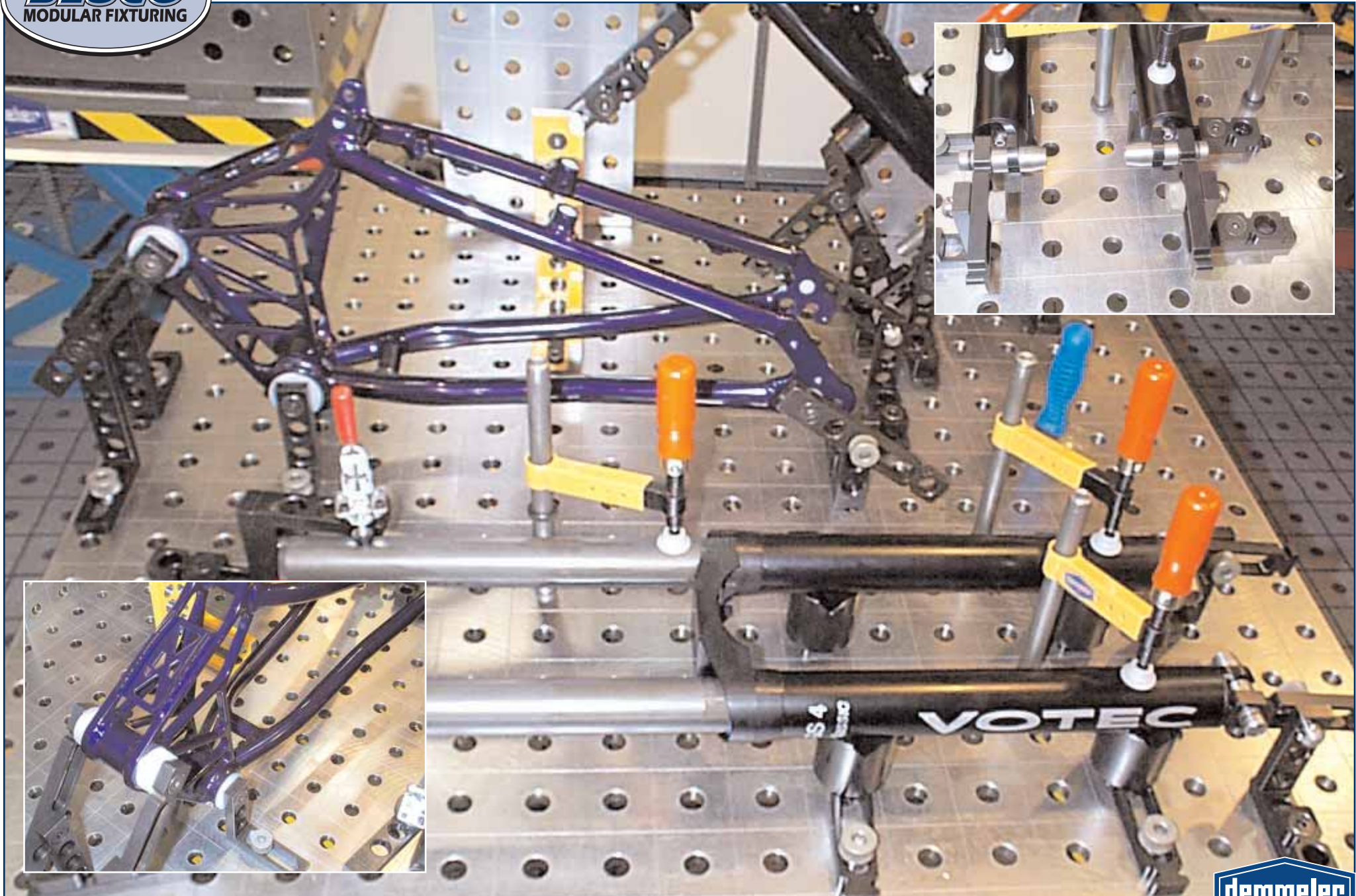


# VEHICLE APPLICATIONS GUIDE



Bluco Corporation 3500 Thayer Ct. Aurora, IL 60504 (866) DR BLUCO (372-5826) [www.BLUCO.com](http://www.BLUCO.com)

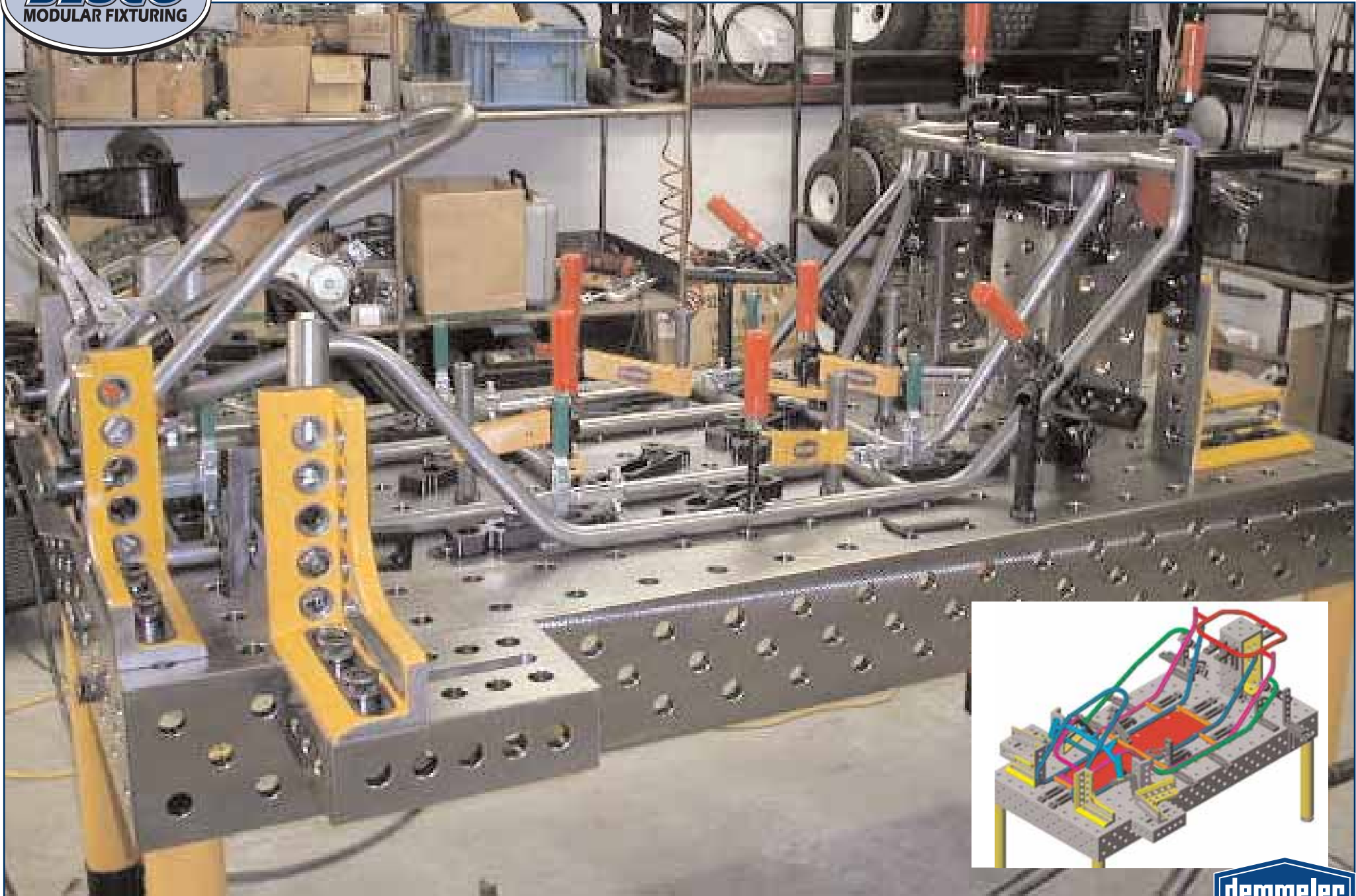
© 2008 Bluco Corporation. All rights reserved.



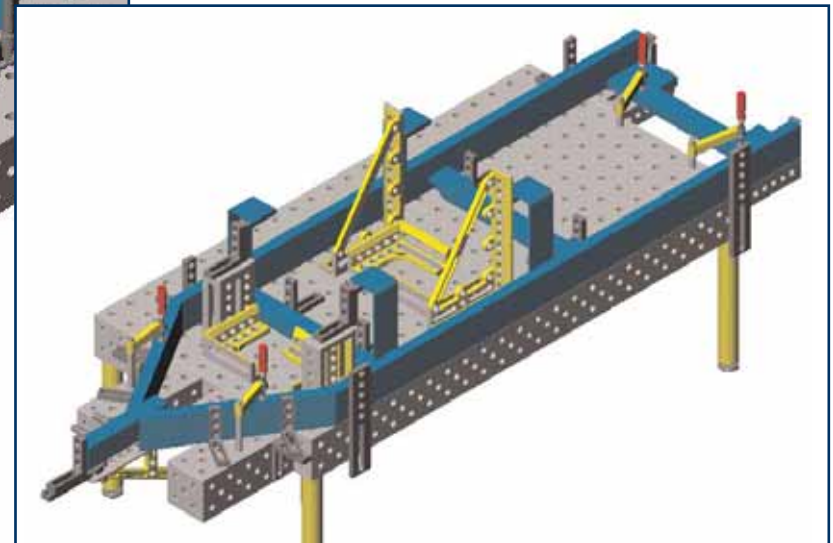
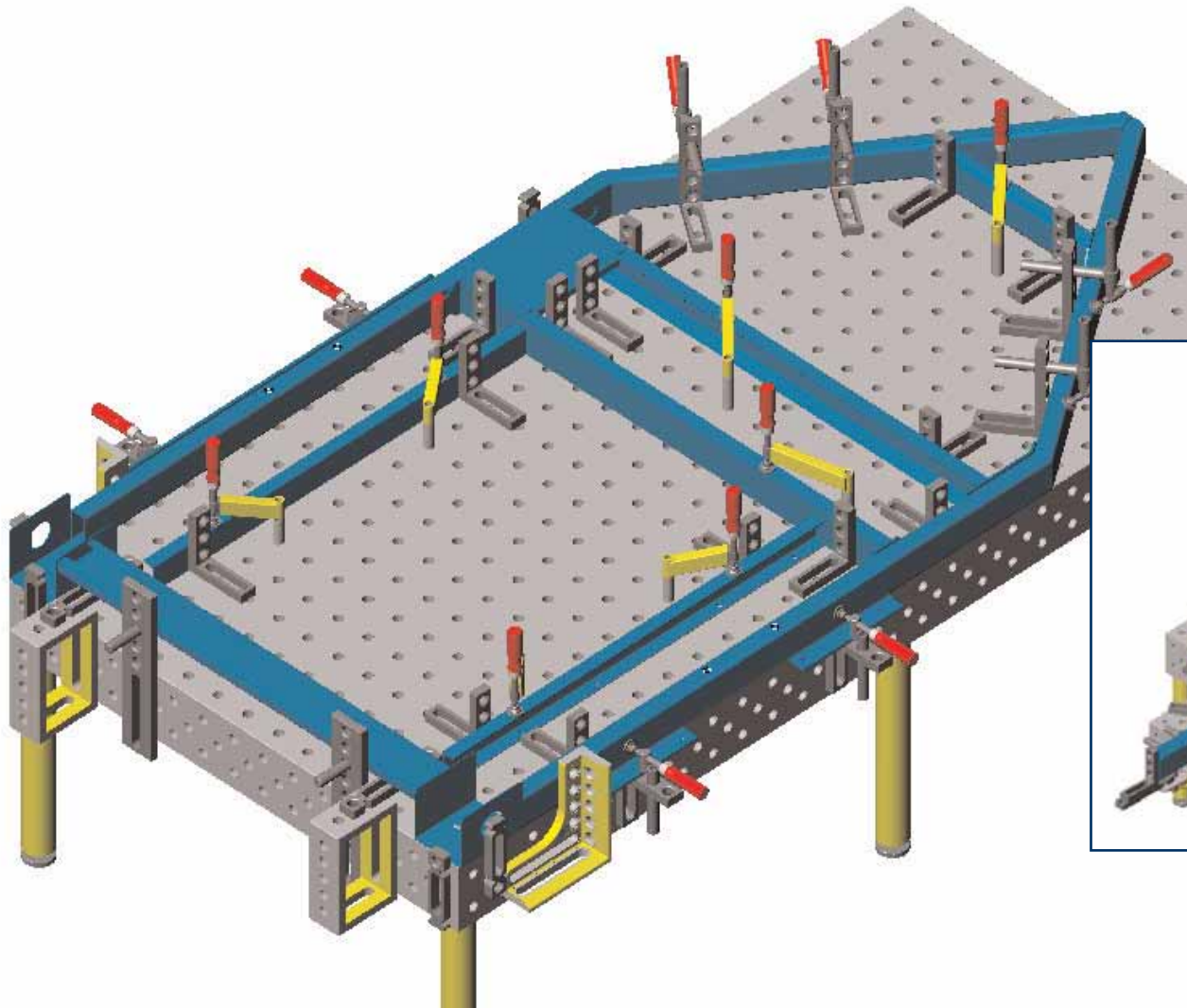
Key mounting points held with custom turned locating pins bolted to standard modular components



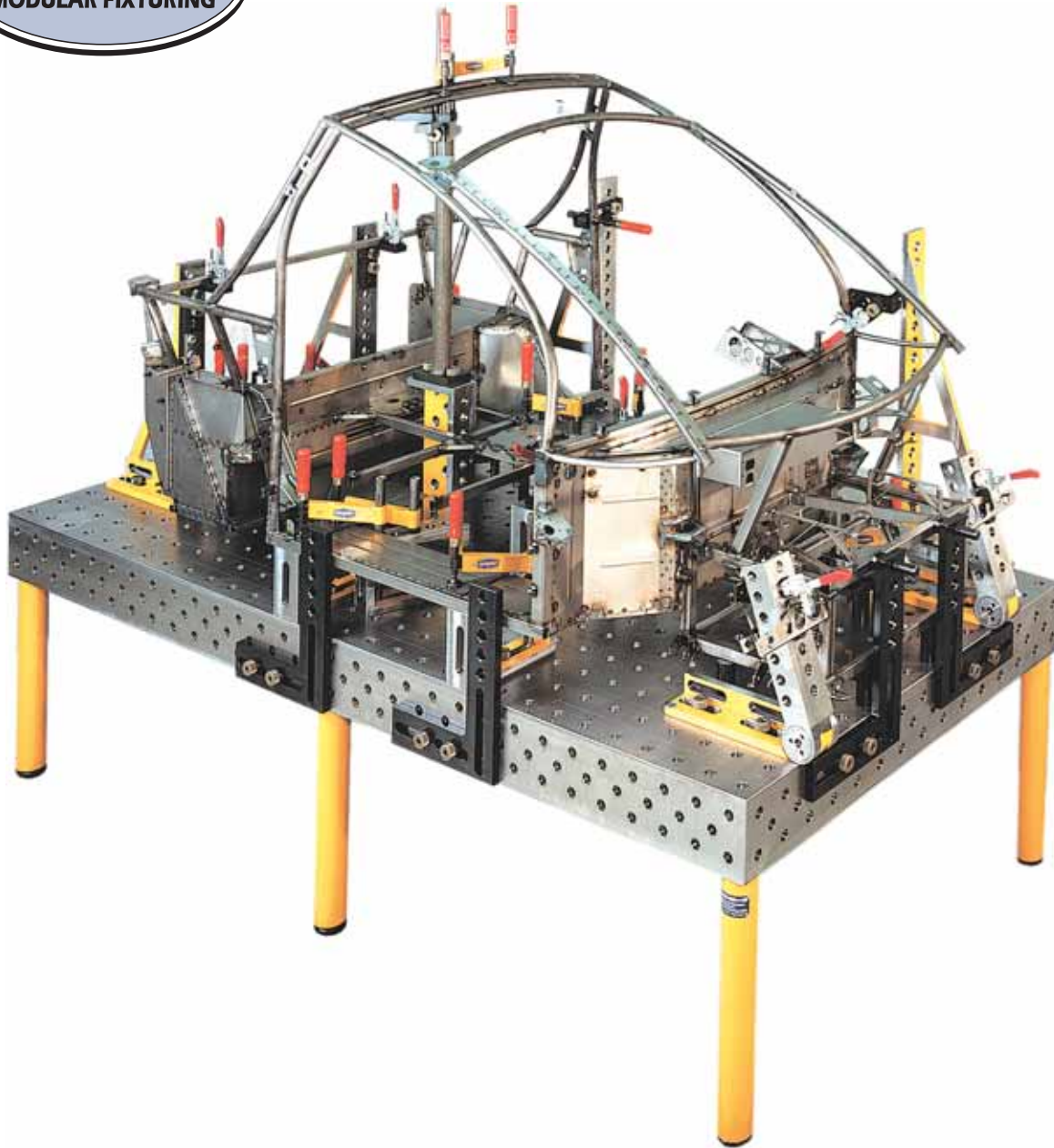
Bike frame held with nylon v-blocks and clamping pads to keep from damaging finish



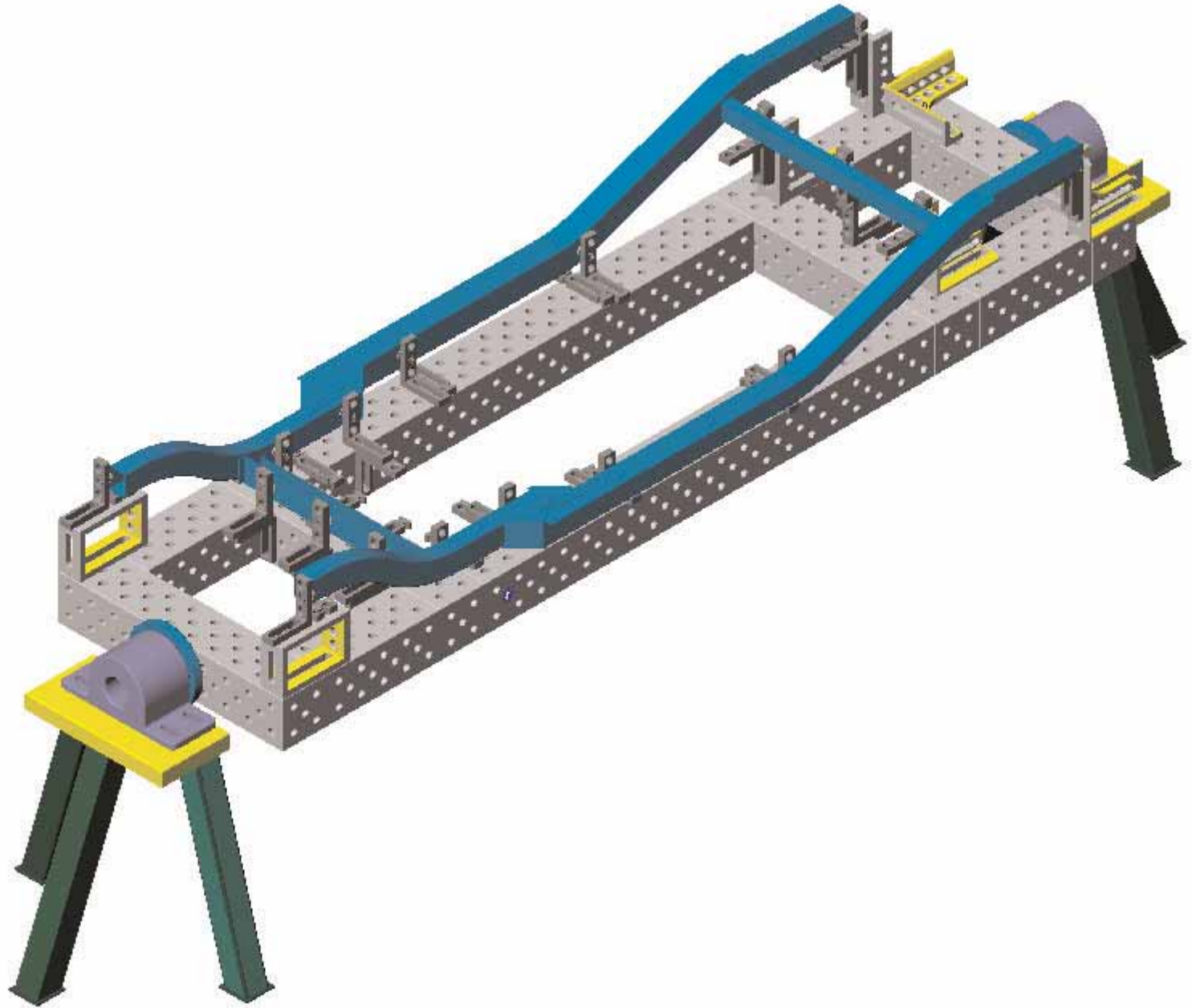
Prototype Go-Cart fixture first designed in solidworks, then built on the shop floor



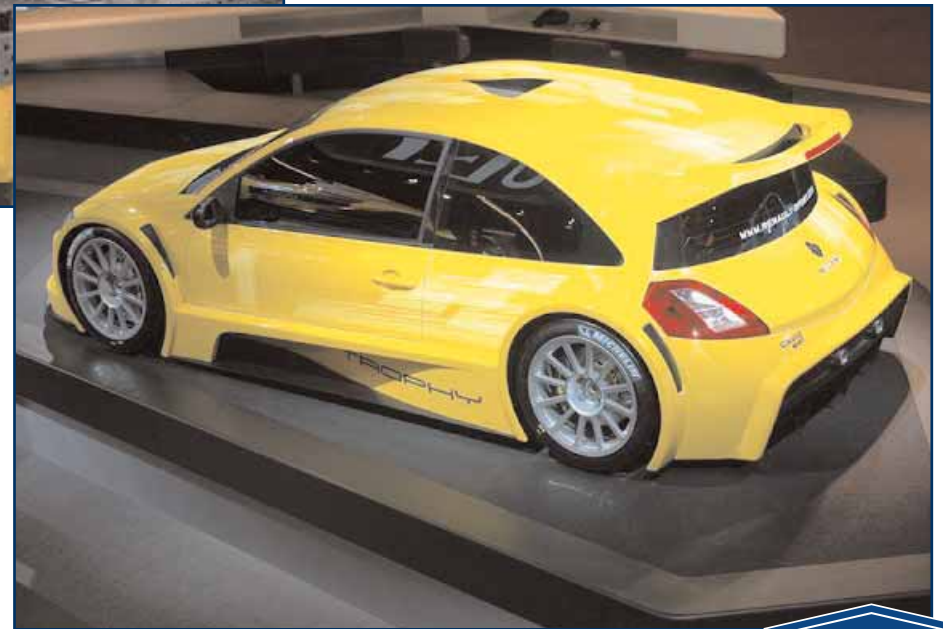
Family of trailer frames fixtured using a standard kit of modular tooling



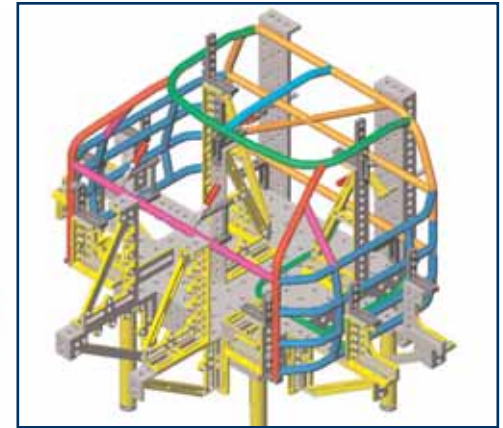
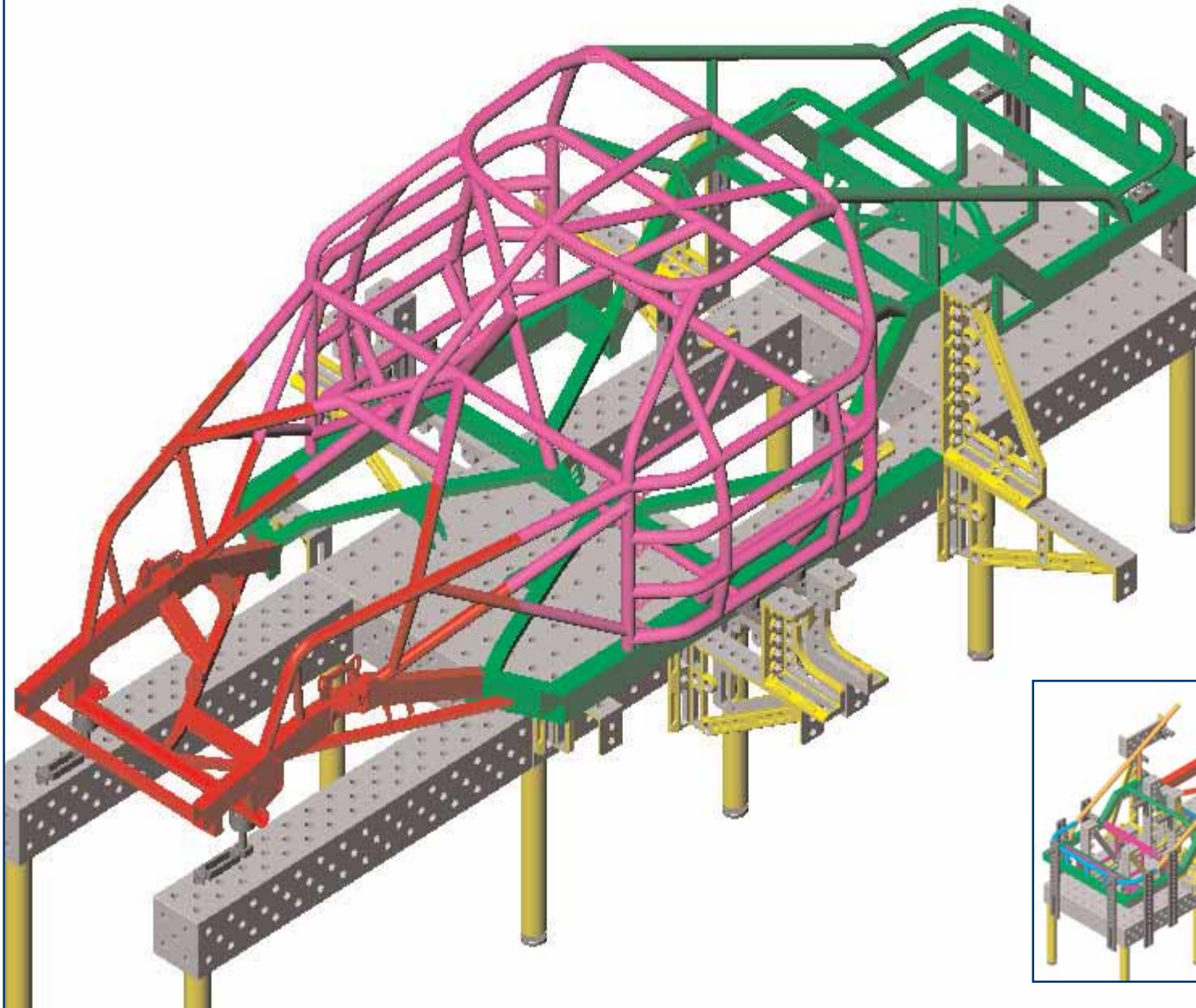
"Smart" car prototype fixture on a 1500 x 3000 mm (5' x 10') table with standard components



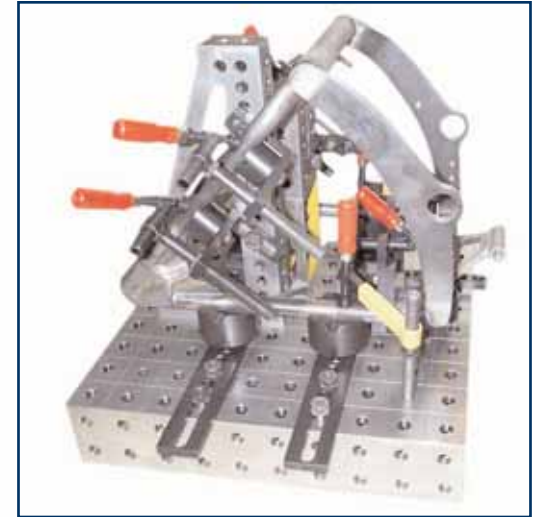
Rollover fixture design for a car frame designed using standard library of modular components



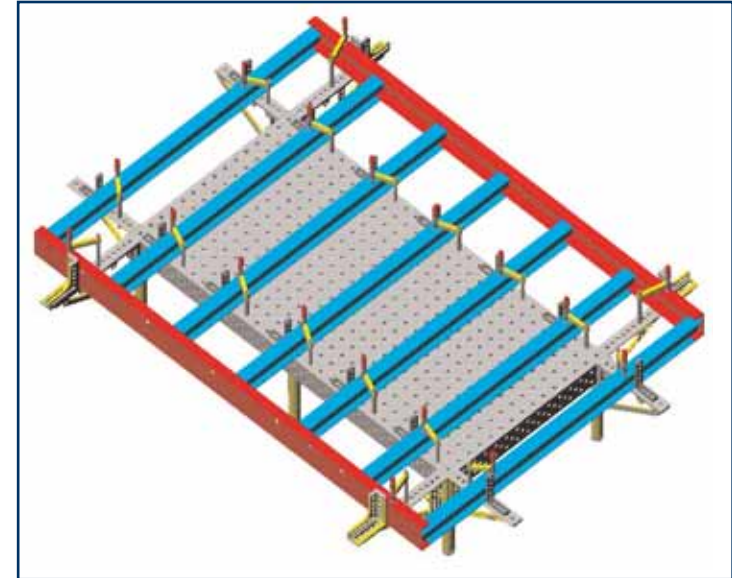
Expensive dedicated fixtures not an option for ever changing concept car



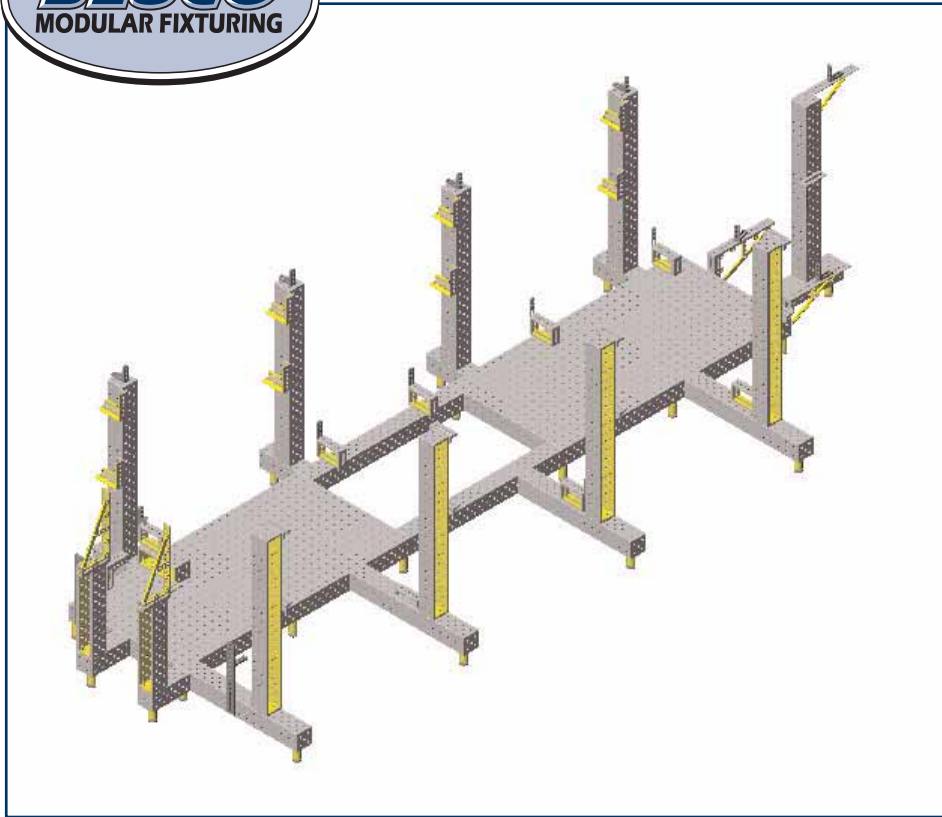
NASCAR chassis built in sub-assemblies (front clip, roll cage, rear clip)



Motorcycle frame fixtured on a 1000 x 1000mm (40" x 40") D28 table



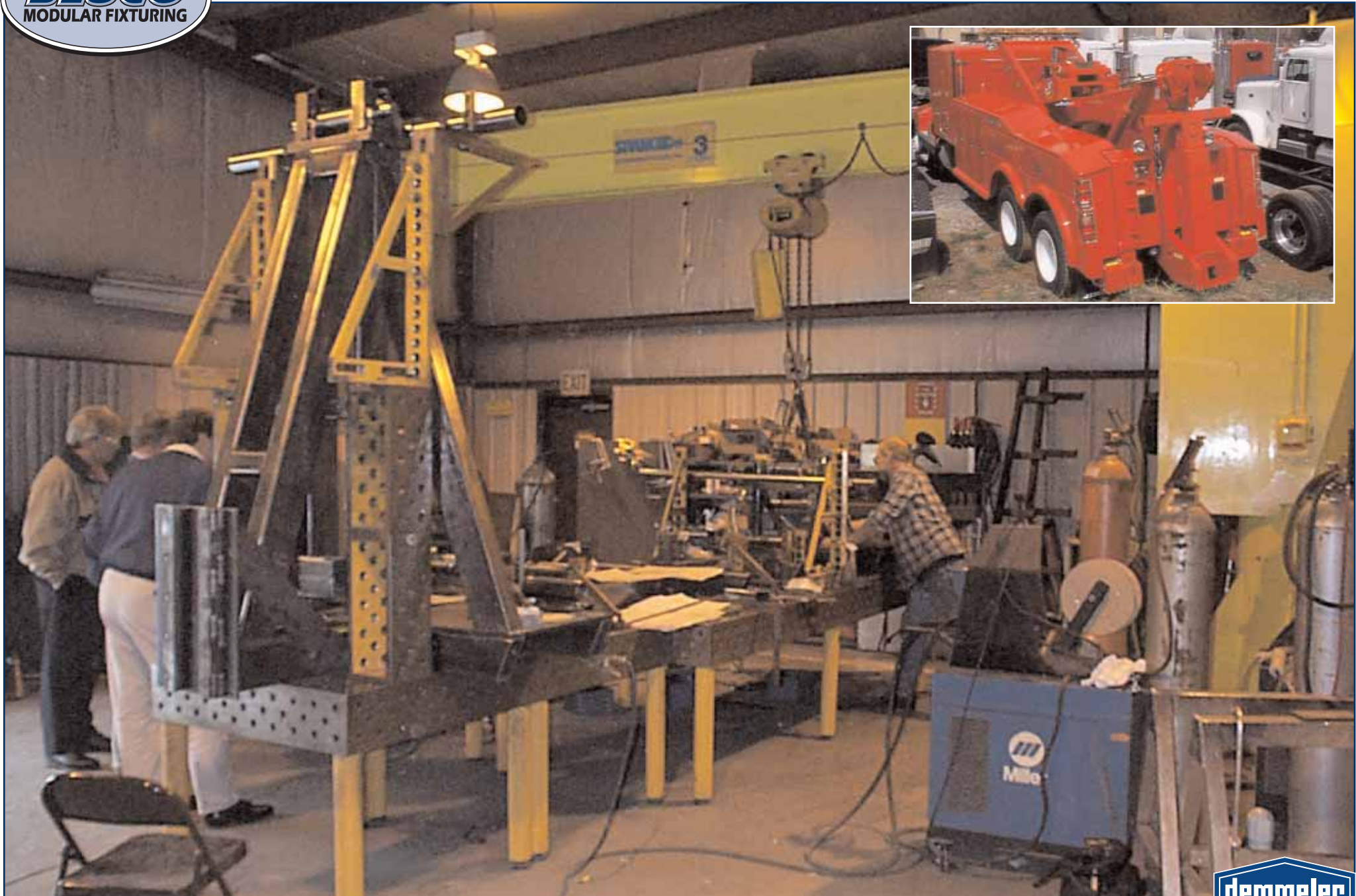
Aluminum transport skid used to carry space station parts in "SuperGuppie" aircraft



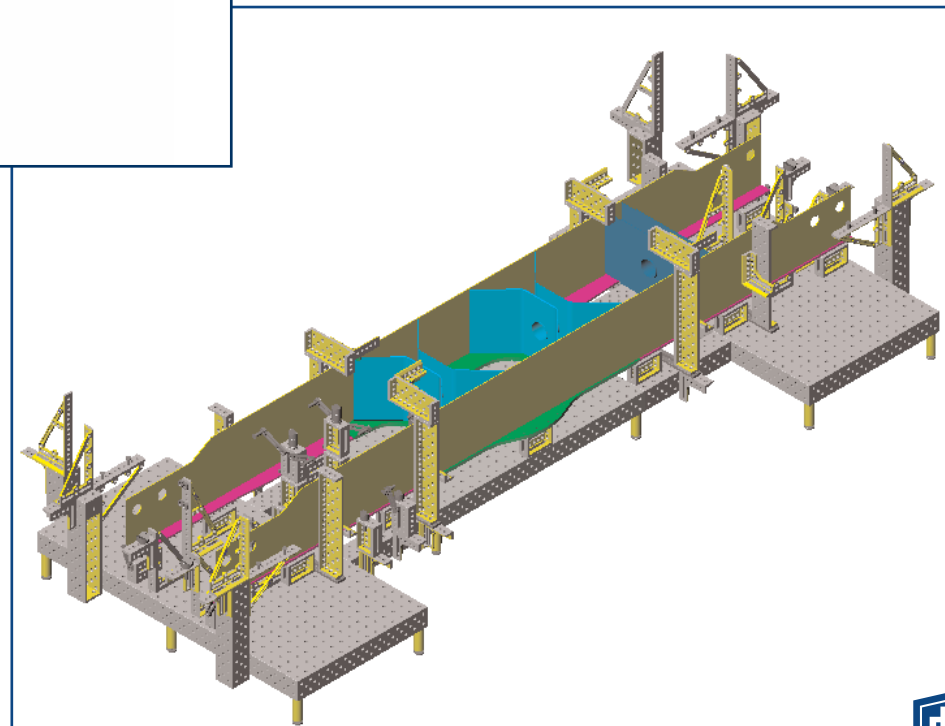
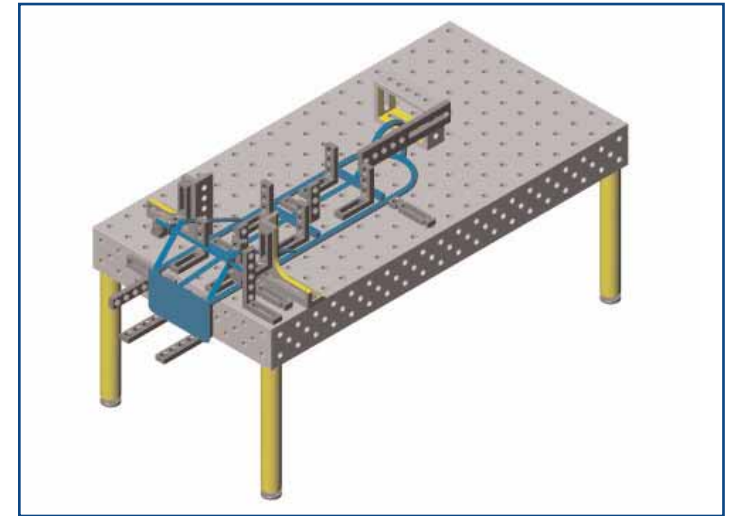
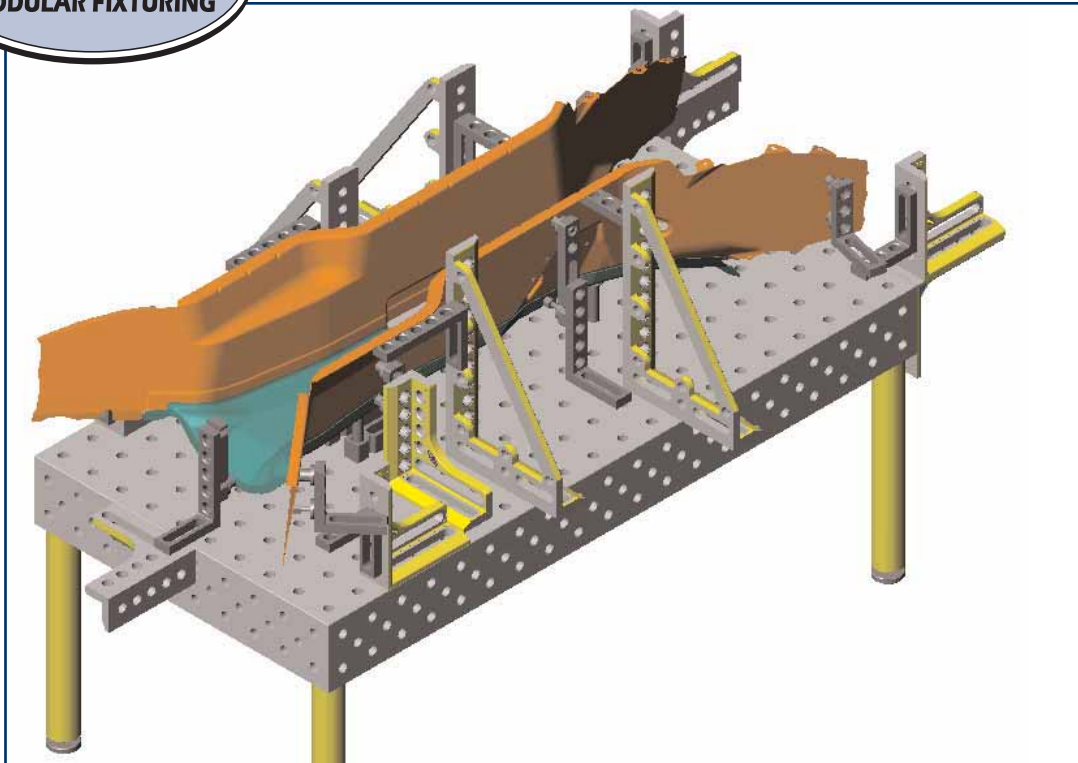
Trolley bus fixture



Final assembly fixture for 30' stainless steel bus frame.



Boom for large tow truck prototyped on multiple tables joined together.



Car chassis, handtruck and mobile crane fixtures