

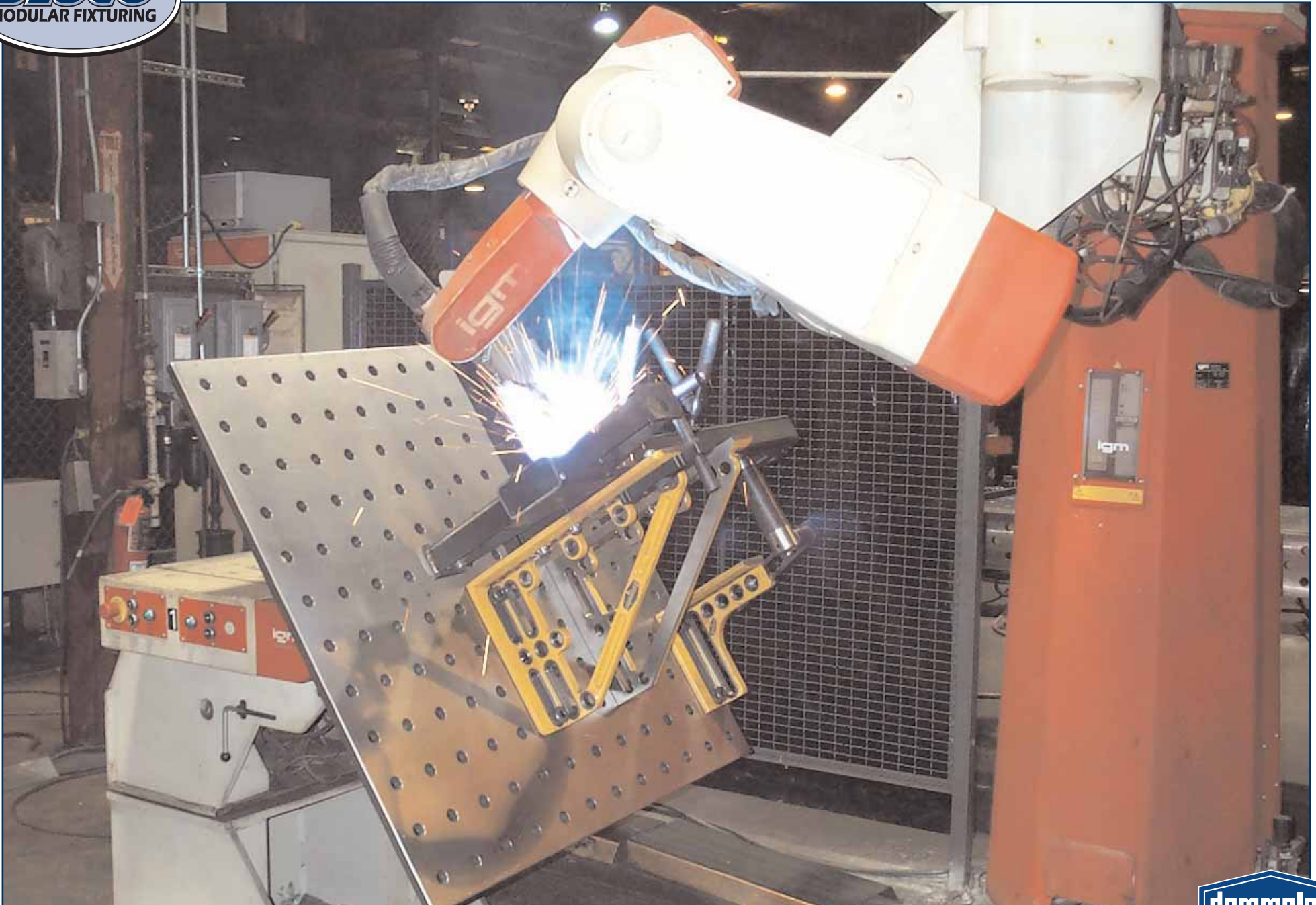
ROBOTICS

APPLICATIONS GUIDE



Bluco Corporation 3500 Thayer Ct. Aurora, IL 60504 (866) DR BLUCO (372-5826) www.BLUCO.com

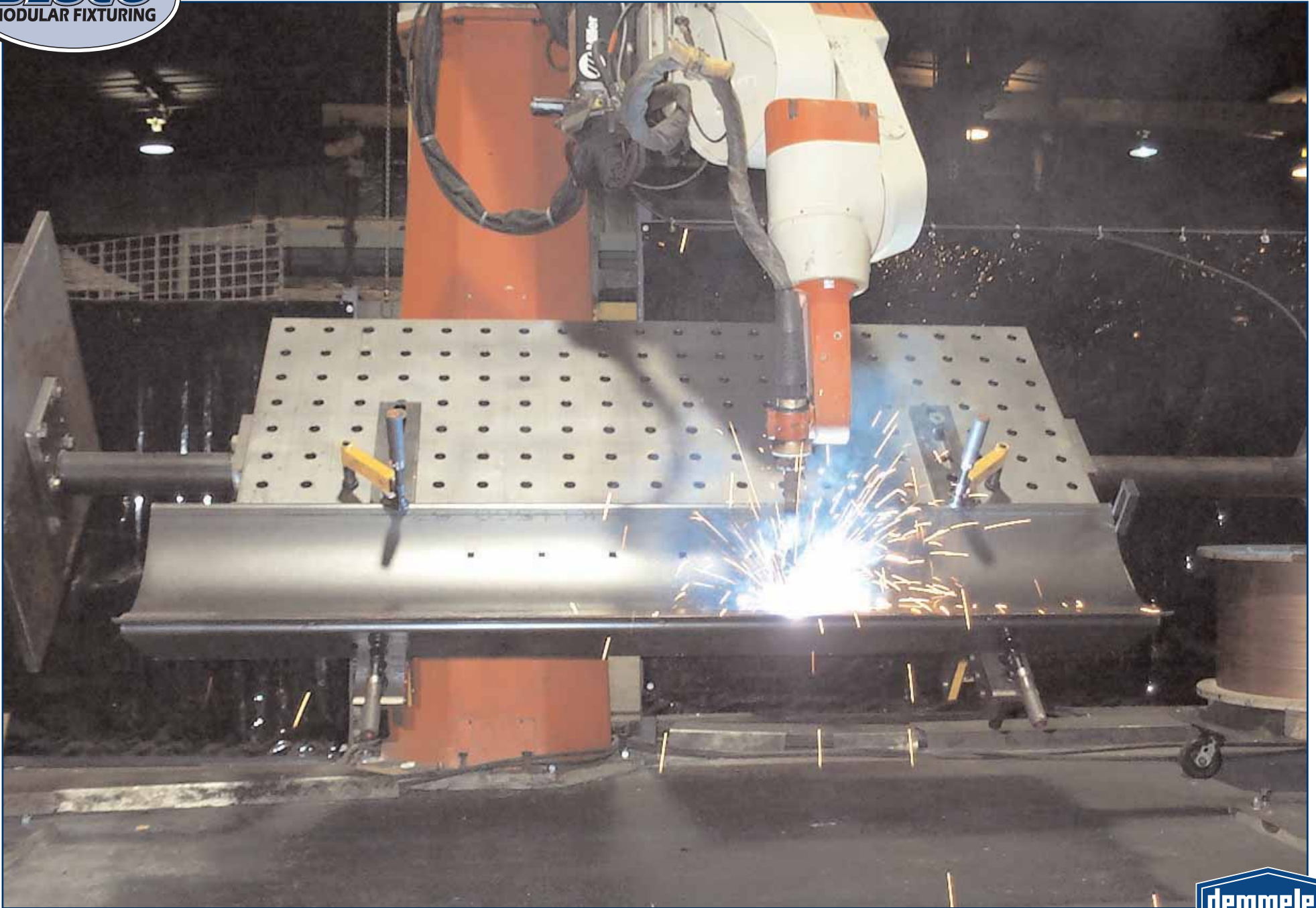
© 2008 Bluco Corporation. All rights reserved.



An adapter plate attached to a lift and rotate positioner holds prismatic parts for a robot



Welder pre-tacks part in a modular fixture before loading into robot cell



A 3-D table (1000 x 2000mm / 40" x 80") is mounted between head and tail stock for rotation



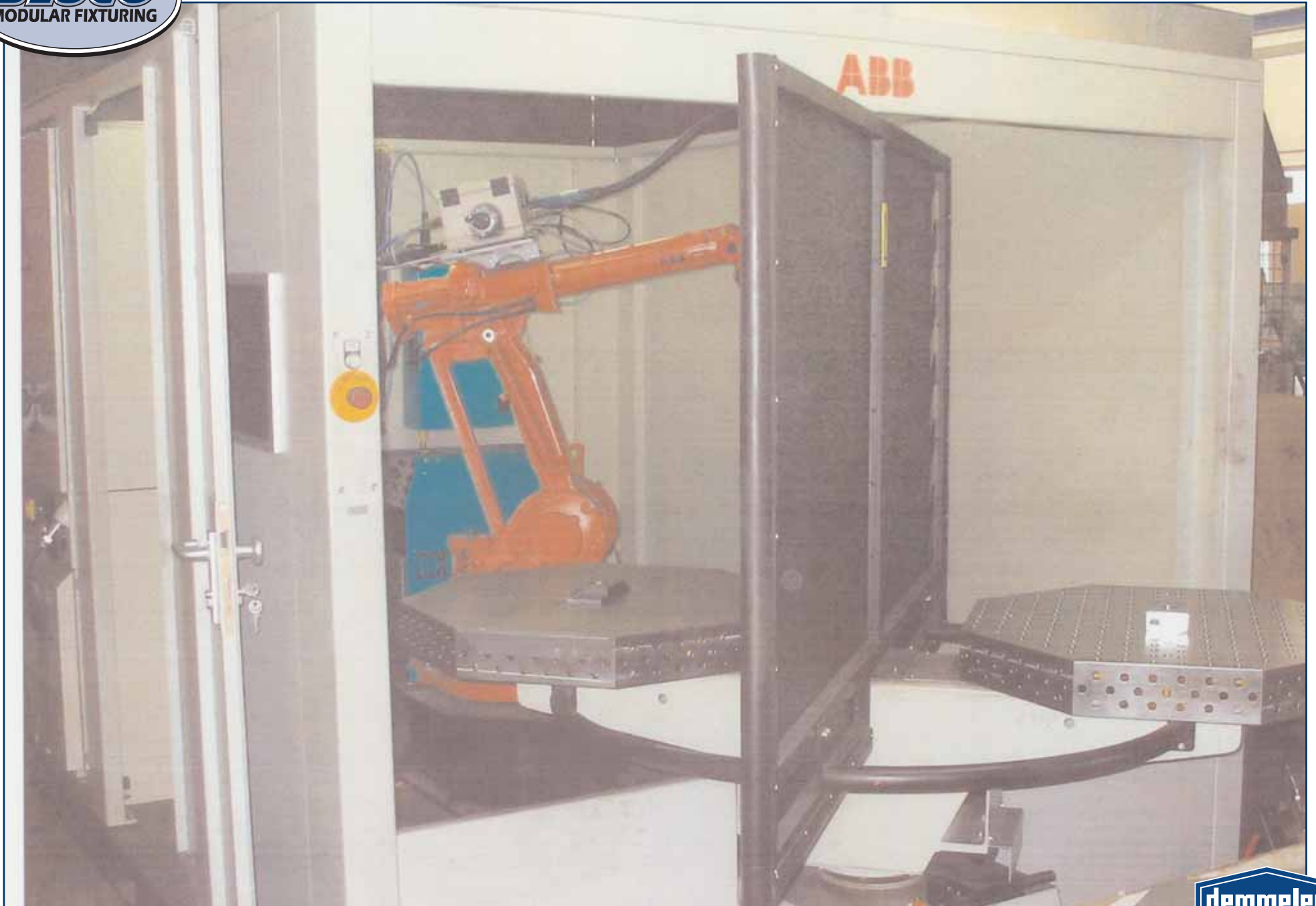
A standard D16 1000 x 2000 mm (40" x 80") table with its legs removed is used in this rollover fixture



Hamburger grill is fixtured upside down with all four edges square for robotic welding



Small, octagonal table in front of robot rotates for full robot access



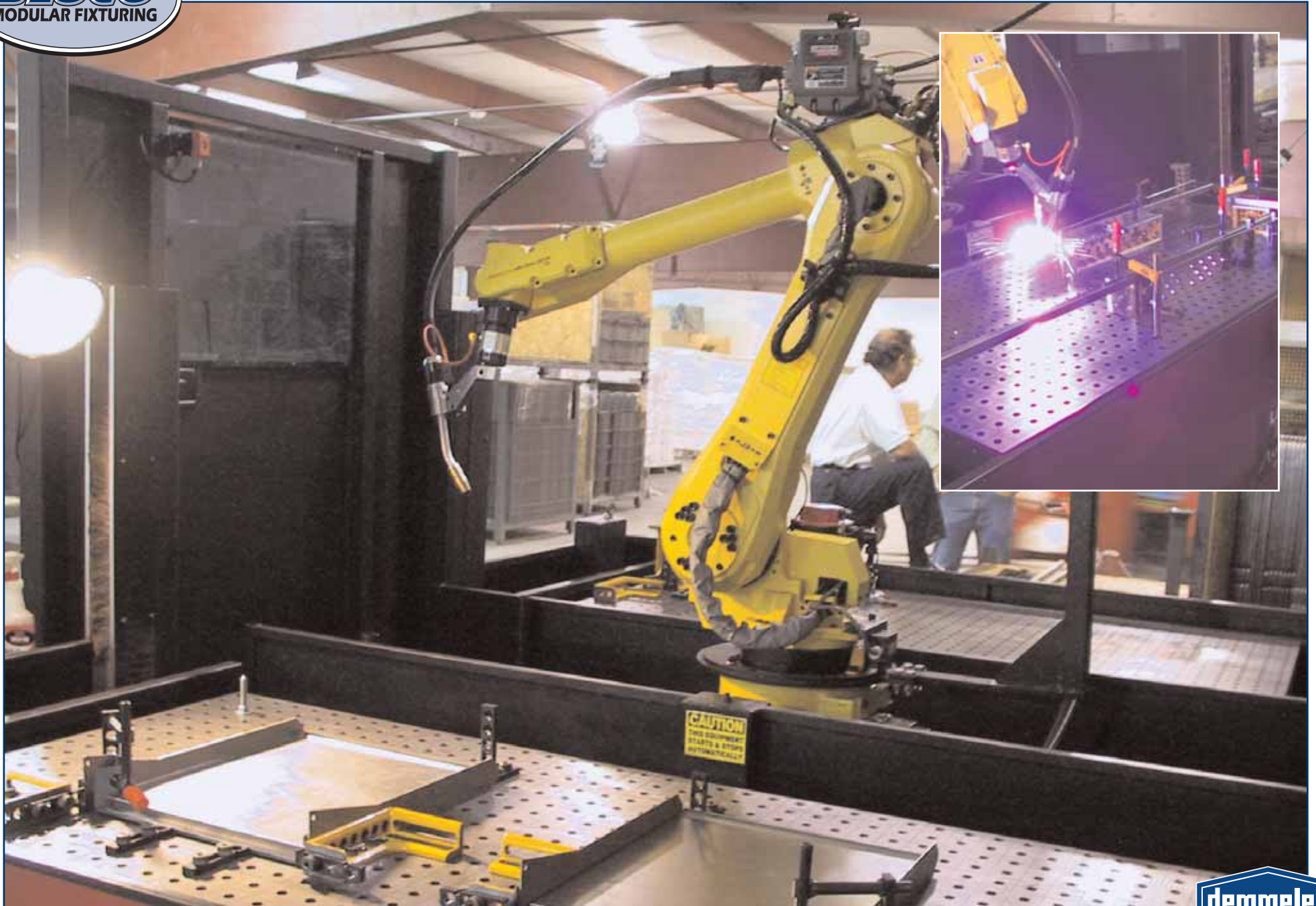
Two identical fixture tables are setup on this rotary table with a screen between



Modular table sits atop a tilt and rotate positioner for short run robotic parts



Two 1000 x 2000mm (40" x 80") tables without legs are used as the base for this rotary pallet changer



Tables on both sides of a robot improve productivity (one side is welding when the other side is loading)



Multiple tables are joined together in front of a traveling gantry robot



U-Form spacer blocks provide plenty of access for overhead traveling robotic welding



A pair of U-form spacer blocks span the entire length to allow for access on both sides of the sheetmetal cabinet



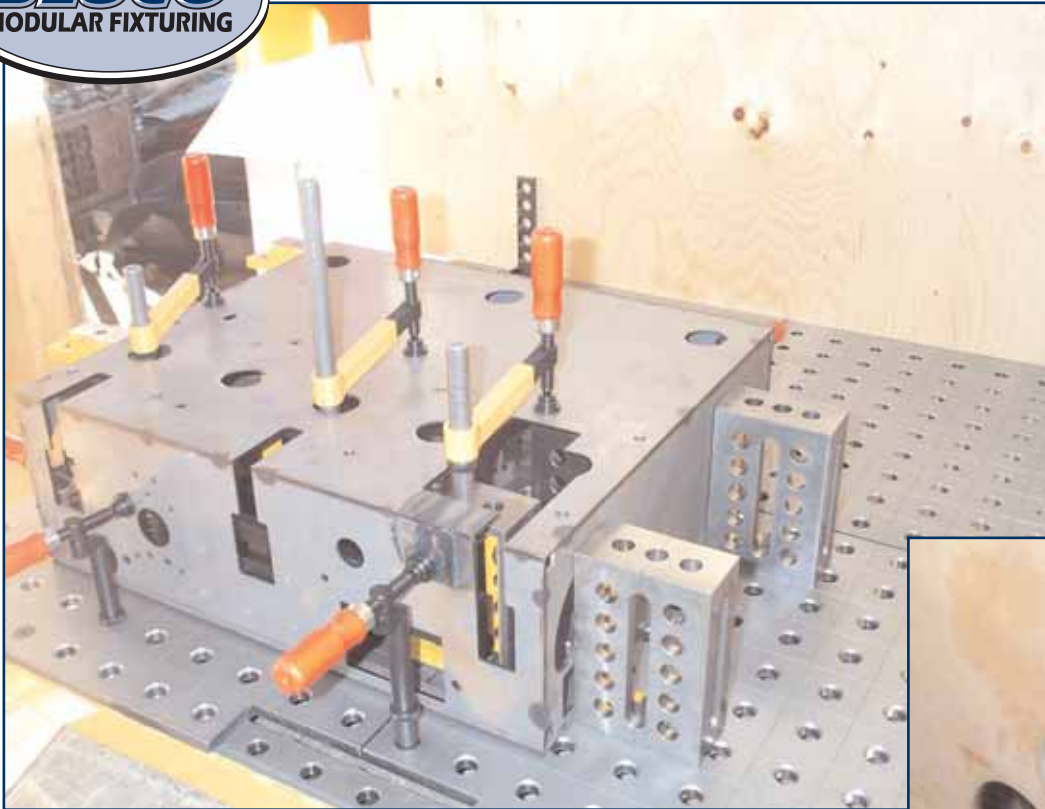
Head and tail stock with modular tables attached supports long u-form block for rollover fixture



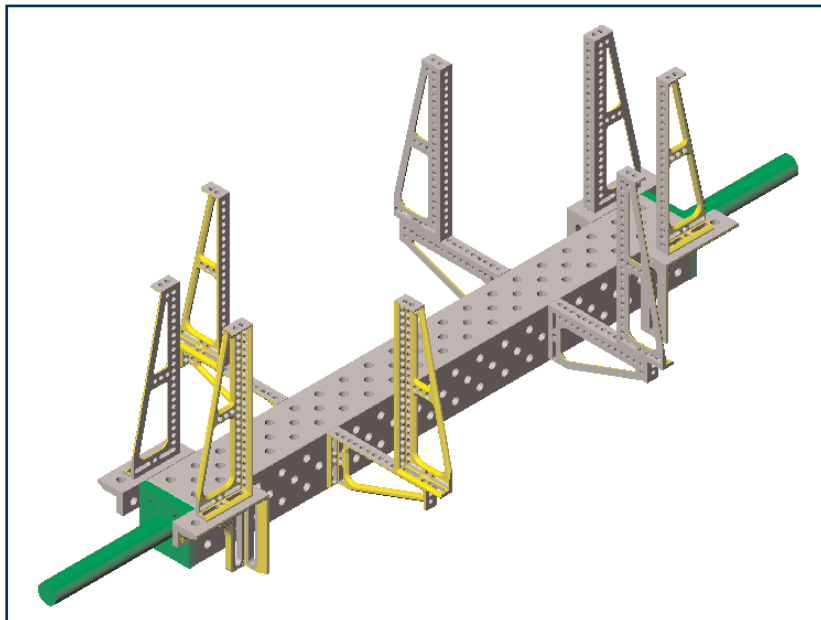
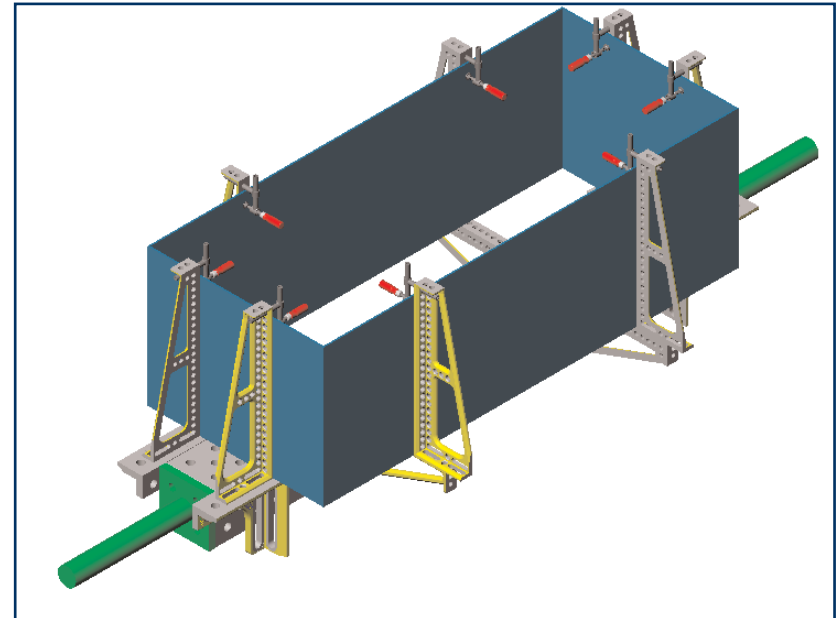
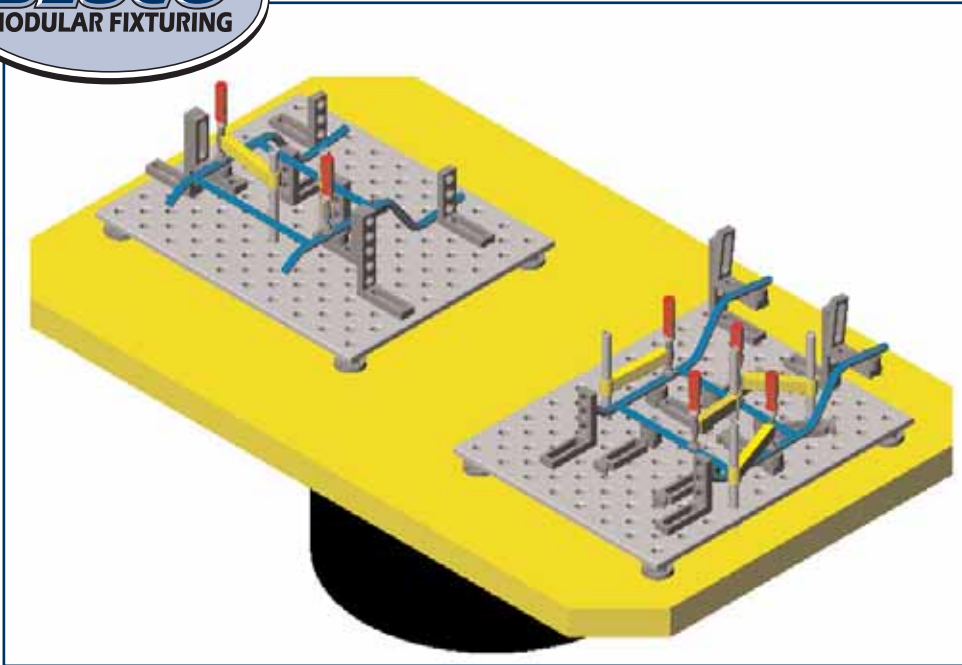
A single U-form spacer block acts as a “spine” to hold outriggers (angles) where needed



Twin plate (left and right) are attached to rotary tables and used to hold radiators



Welding fixture set up for Trumpf laser



Robot indexer and headstock / tailstock positioner